

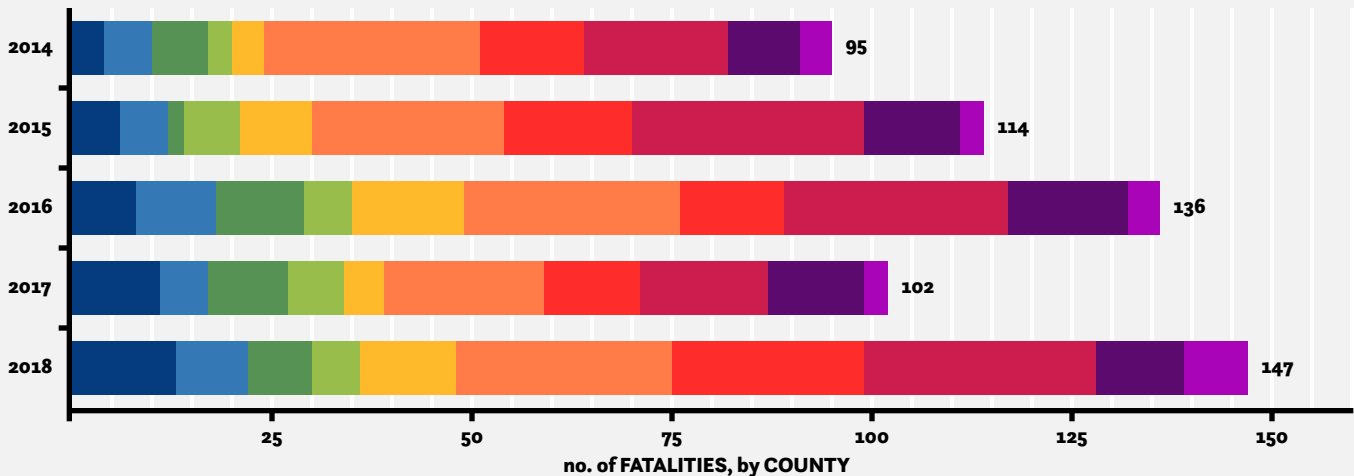
TRAFFIC SAFETY

A total of 594 people were killed in New Hampshire traffic crashes from 2014 to 2018 in, an average of 119 fatalities per year. The chart below details the number of annual fatalities statewide and in each New Hampshire county from 2014-2018, as well as the average number of fatalities during the five-year period.

	2014	2015	2016	2017	2018	TOTAL	2014-18 AVERAGE
BELKNAP	4	6	8	11	13	42	8.4
CARROLL	6	6	10	6	9	37	7.4
CHESHIRE	7	2	11	10	8	38	7.6
COOS	3	7	6	7	6	29	5.8
GRAFTON	4	9	14	5	12	44	8.8
HILLSBOROUGH	27	24	27	20	27	125	25
MERRIMACK	13	16	13	12	24	78	15.6
ROCKINGHAM	18	29	28	16	29	120	24
STRAFFORD	9	12	15	12	11	59	11.8
SULLIVAN	4	3	4	3	8	22	4.4
NEW HAMPSHIRE	95	114	136	102	147	594	118.8

Source: National Highway Traffic Safety Administration

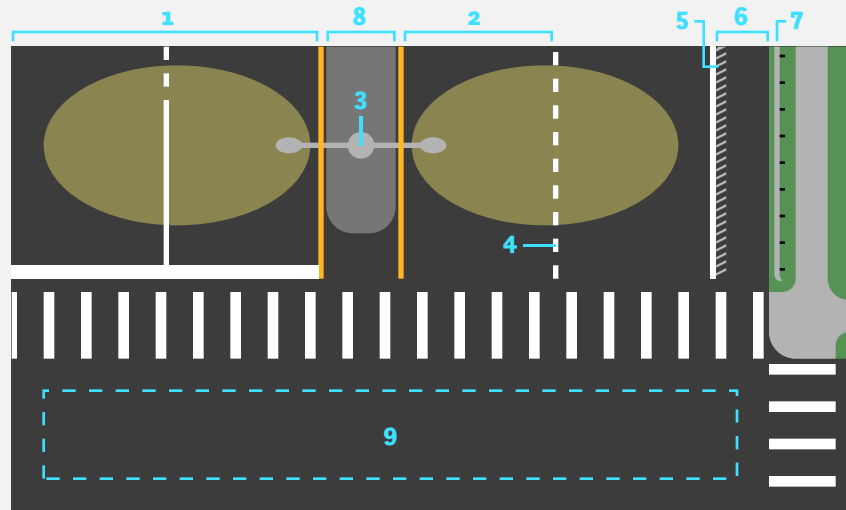
STATEWIDE ANNUAL TRAFFIC-RELATED DEATHS



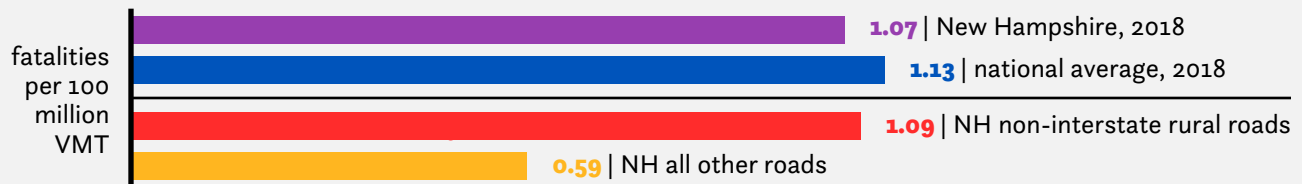
Three major factors are associated with fatal vehicle crashes: driver behavior, vehicle characteristics and roadway features. It is estimated that roadway features are likely a contributing factor in approximately one-third of fatal traffic crashes.

Roadway features that impact safety include:

1. number of lanes
2. lane widths
3. lighting
4. lane markings
5. rumble strips
6. shoulders
7. guard rails
8. median barriers
9. intersection design
10. other shielding devices (not pictured)

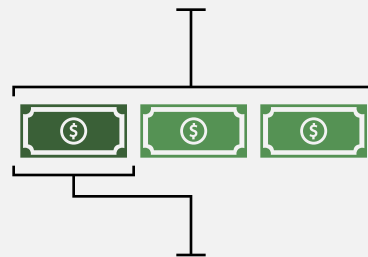


New Hampshire's overall traffic fatality rate of 1.07 fatalities per 100 million vehicle miles of travel (VMT) in 2018 is lower than the national average of 1.13. The fatality rate on New Hampshire's non-interstate rural roads is nearly double that on all other roads in the state (1.09 fatalities per 100 million vehicle miles of travel vs. 0.59).



Traffic crashes in New Hampshire imposed a total of \$1.8 billion in economic costs in 2018. TRIP estimates that traffic crashes where a lack of adequate roadway safety features were likely a contributing factor resulted in \$606 million in economic costs in New Hampshire in 2018. According to a 2015 National Highway Traffic Safety Administration (NHTSA) report, the economic costs of traffic crashes includes work and household productivity losses, property damage, medical costs, rehabilitation costs, legal and court costs, congestion costs and emergency services.

Traffic crashes in NH imposed **\$1.8 billion** in economic costs in 2018



The lack of adequate roadway safety features contributed to **\$606 million** in economic costs for NH in 2018

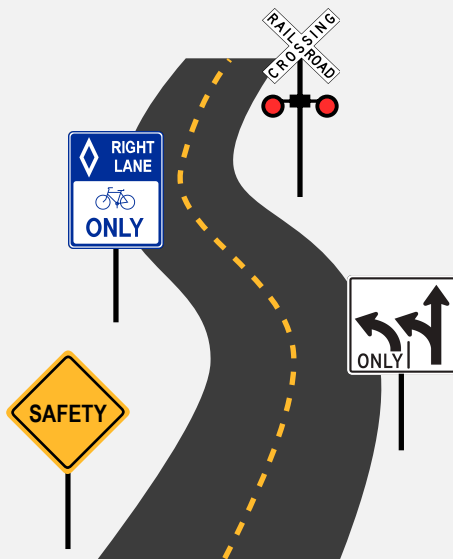


Improving safety on New Hampshire’s roadways can be achieved through further improvements in vehicle safety; improvements in driver, pedestrian, and bicyclist behavior; and, a variety of improvements in roadway safety features.



ROADWAY SAFETY IMPROVEMENTS

The severity of serious traffic crashes could be reduced through roadway improvements, where appropriate, such as:




- Converting intersections to **roundabouts**
- removing or **shielding roadside objects**
- the addition of **left-turn lanes** at intersections
- the **signalization** of intersections
- adding or improving **median barriers**
- improved **lighting**
- adding centerline or shoulder **rumble strips**
- providing appropriate pedestrian and bicycle facilities, including **sidewalks and bicycle lanes**
- providing **wider lanes**, wider and paved **shoulders**
- upgrading roads from two lanes to **four lanes**
- providing better road and **lane markings**
- updating **rail crossings**

The U.S. has a \$146 billion backlog in needed roadway safety improvements, according to a 2017 **report** from the AAA Foundation for Traffic Safety. The report found implementing these cost-effective and needed roadway safety improvements on U.S. roadways would save approximately **63,700 lives** and reduce the number of serious injuries as a result of traffic crashes by approximately **350,000 over 20 years**.

\$146 billion investment in roadway safety improvements would save approx. **63,700 lives** and **350,000 serious injuries** from resulting from traffic crashes over a 20 year span



63,700 lives



350,000 serious injuries

